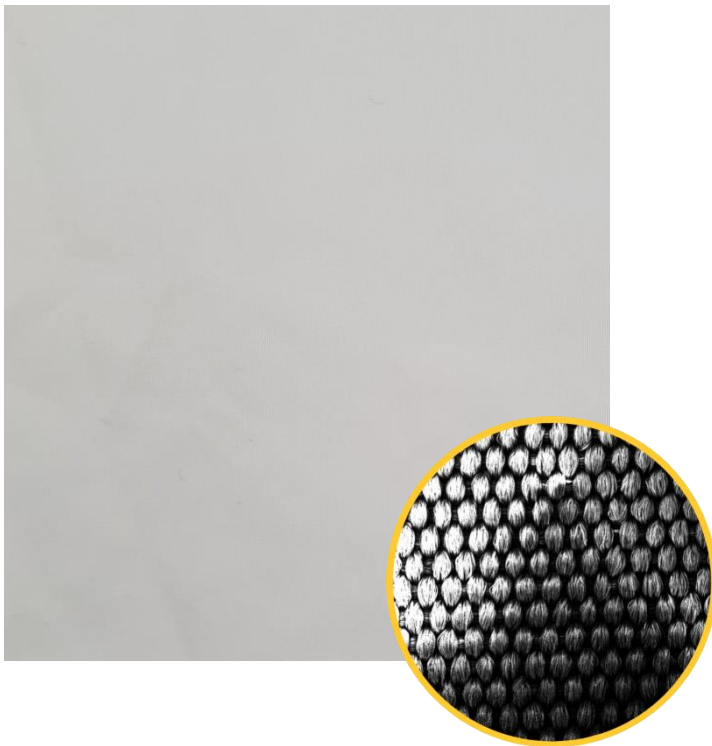


# Microfibers



## Microfiber Cleanroom Wipers

Series: W-MX-LSE



### Features:

- Made from micro-filament of polyester and nylon.
- Laser sealed edges to minimize fibers and particles contaminants.
- Manufactured & packed in a cleanroom environment Class 10 (ISO 14644 Class 4).
- Solvent-safe Double bag Cleanroom packaging.
- Efficient cleaning with less solvent usage.
- Ultrafine microfiber yarn offers superior wiping efficiency without leaving any scratches on the surfaces.
- Superior for dry cleaning capability or solution cleaning applications.

### Applications:

- Designed for use in sensitive cleanroom environments Class 10 (ISO 14644 Class 4) and above
- Cleaning delicate or sensitive surfaces
- Cleaning of medical devices
- Cleaning of display panels, screens and lenses

<b>FED</b>	1	10	100	1000	10K	100K
<b>ISO</b>	3	4	5	6	7	8
<b>GMP</b>			A/B		C	D

### Order Information

<b>W-MX4-LSE</b>	4" X 4" (10cm x 10cm)	400 wipers/bag, 20 bags/case
<b>W-MX6-LSE</b>	6" X 6" (15cm x 15cm)	100 wipers/bag, 40 bags/case
<b>W-MX9-LSE</b>	9" X 9" (23cm x 23cm)	100 wipers/bag, 20 bags/case
<b>W-MX12-LSE</b>	12" X 12" (31cm x 31cm)	100 wipers/bag, 20 bags/case

\*Customized sizes are available.

Revision Date : 22-Apr-2025

Singapore Tel : 65. 6276.6123  
Malaysia Tel : 60. 4643.2128  
Thailand Tel : 66. 3579.6832  
Philippines Tel : 63. 498.270.219  
Indonesia Tel : 62. 218.990.6301

[www.inout.com.sg](http://www.inout.com.sg)

Enquiries : [sales@inout.com.sg](mailto:sales@inout.com.sg)

MANUFACTURED AND DISTRIBUTED BY INOUT ENTERPRISE PTE LTD

# Microfibers



## Composition & Attributes

Wiper Material /Color	70% Polyester and 30% Nylon
Mass per unit area ( $\pm 10 \text{ g/m}^2$ ) Test method: ASTM D3776	80

## Technical data (According to IEST-RP-CC004.3)

Organic Contaminant via Fourier Transform Infrared Spectroscopy, FTIR	No Silicone Oil, No Amide, No Dioctyl Phthalate (DOP)	
Liquid particle counter, LPC ( $\geq 0.5 \mu\text{m}^*$ particles/ $\text{m}^2$ )	$18 \times 10^6$	
Non-volatile residue, NVR ( $\text{g/m}^2$ )	DI-water	0.05
	IPA	0.15
Ions Contamination ( $\mu\text{g/g}$ )	Chloride	0.60
	Nitrate	0.30
	Sulphate	0.30

### Note:

The data in this table represents typical analyses at the time of publication. (Tested by internal laboratory)  
These are not specifications. CleanEra is continuously refining both its process and its products.  
(As necessary, updates will be made to the product data sheet.)

## Recommended Industries



Revision Date : 22-Apr-2025

Singapore Tel : 65. 6276.6123  
Malaysia Tel : 60. 4643.2128  
Thailand Tel : 66. 3579.6832  
Philippines Tel : 63. 498.270.219  
Indonesia Tel : 62. 218.990.6301

[www.inout.com.sg](http://www.inout.com.sg)

Enquiries : [sales@inout.com.sg](mailto:sales@inout.com.sg)

MANUFACTURED AND DISTRIBUTED BY INOUT ENTERPRISE PTE LTD